




Description

ClickScrew 1.0



When using the ClickScrew for the first time, securely connect the flange to the lifting device.

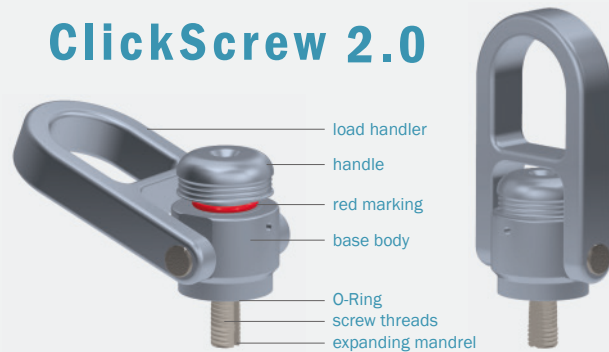
- 1 Implement** Insert the thread of the ClickScrew into the thread of the load until the flat surface of the base body rests on the load.
- 2 Locking** Slide the ClickScrew operation sleeve all the way down until you hear and feel a „click“, now the ClickScrew is locked.
- 3 Lifting** Lift the load handler with the crane until the load rests securely in the right place.
- 4 Solving** Pull the ClickScrew operation sleeve up and loosen the ClickScrew from the load.

 Operation time approx. 1 second.

Advantages


- + Various devices can be connected to the flange
- + Perfect for straight pull
- + No damages to the threads
- + For use in threads of any components
- + Quick, easy and secure handling
- + No maintenance effort
- + CE – compliant according to 2006/42/EG
- + Available in any thread size
- + Better occupational safety

ClickScrew 2.0



When using the ClickScrew for the first time, securely connect the load handler to the lifting device.

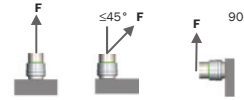
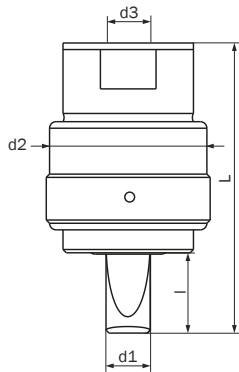
- 1 Implement** Move the load handler aside, insert the thread of the ClickScrew into the thread of the load until the flat surface of the base body rests on the load.
- 2 Locking** Slide the ClickScrew handle all the way down until you hear and feel a „click“, now the ClickScrew is locked.
- 3 Lifting** Lift the load handler with the crane until the load rests securely in the right place.
- 4 Solving** Move the load handler aside, pull the ClickScrew handle up and loosen the ClickScrew from the load.

 Operation time approx. 2 seconds.

- + Handle can be connected directly to the crane
- + Perfect for straight pull and diagonal pull
- + Standard sizes equal to normal standard devices
- + No damages to the threads
- + For use in threads of any components
- + Quick, easy and secure handling
- + No maintenance effort
- + CE – compliant according to 2006/42/EG
- + Available in any thread size
- + Better occupational safety

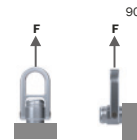
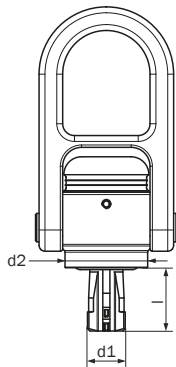
Dimension

ClickScrew 1.0



Type	Thread d1 mm	l mm	L mm	d2 mm	d3 mm	kg straight pull each	total kg at max. 45°	total kg at max. 90°
ML8	M8x1,25	18	82	50	M8	140	30	25
ML10	M10x1,5	18	82	50	M10	230	50	40
ML12	M12x1,75	18	82	50	M12	340	90	70
ML16	M16x2	25	89	50	M16	700	150	120
ML20	M20x2,5	25	112	61	M20	1200	260	210
ML24	M24x3	35	122	61	M24	1800	345	275
ML27	M27x3	35	122	61	M27	2500	460	365
ML30	M30x3,5	35	122	61	M30	3200	580	460

ClickScrew 2.0

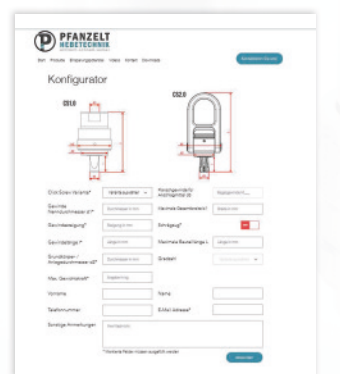


Type	Thread d1 mm	l mm	d2 mm	kg straight pull each	total kg at max. 90°
CS2.0 M6	M6x1	13	25	50	50
CS2.0 M8	M8x1,25	13	25	140	140
CS2.0 M10	M10x1,5	17	25	230	230
CS2.0 M12	M12x1,75	21	35	340	340
CS2.0 M16	M16x2	27	35	700	700
CS2.0 M20	M20x2,5	30	50	1200	1200
CS2.0 M24	M24x3	36	50	1800	1800
CS2.0 M27	M27x3	45	65	2500	2500
CS2.0 M30	M30x3,5	45	65	3200	3200
CS2.0 M36	M36x4	45	65	3200	3200

DID NOT FIND THE RIGHT SIZE?

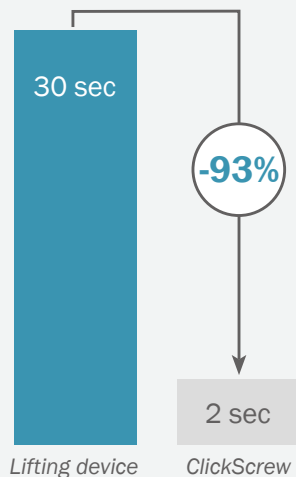
Use our ClickScrew configurator on our website
www.pfanzelt-hebetechnik.de

We will provide you with a ClickScrew in any size you need!



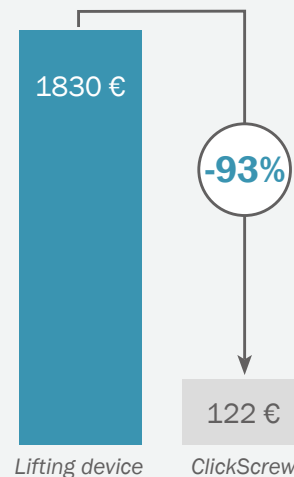


PROCESSING TIME



Time savings approx. 28 seconds per ClickScrew

PROCESSING COSTS



Costs savings 1708 € per ClickScrew

Basis of calculation 20 parts per day and 50€/h in one year

